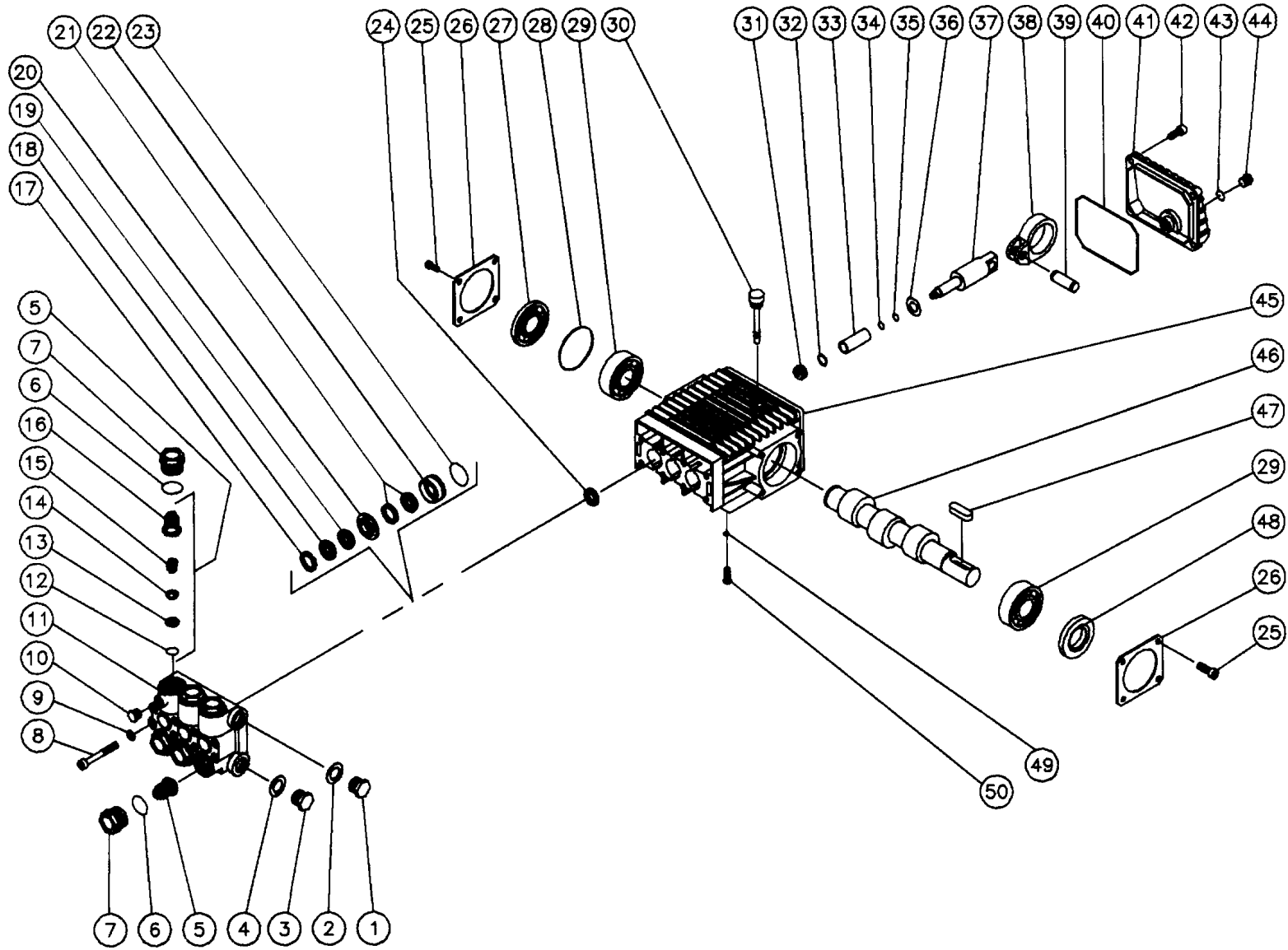


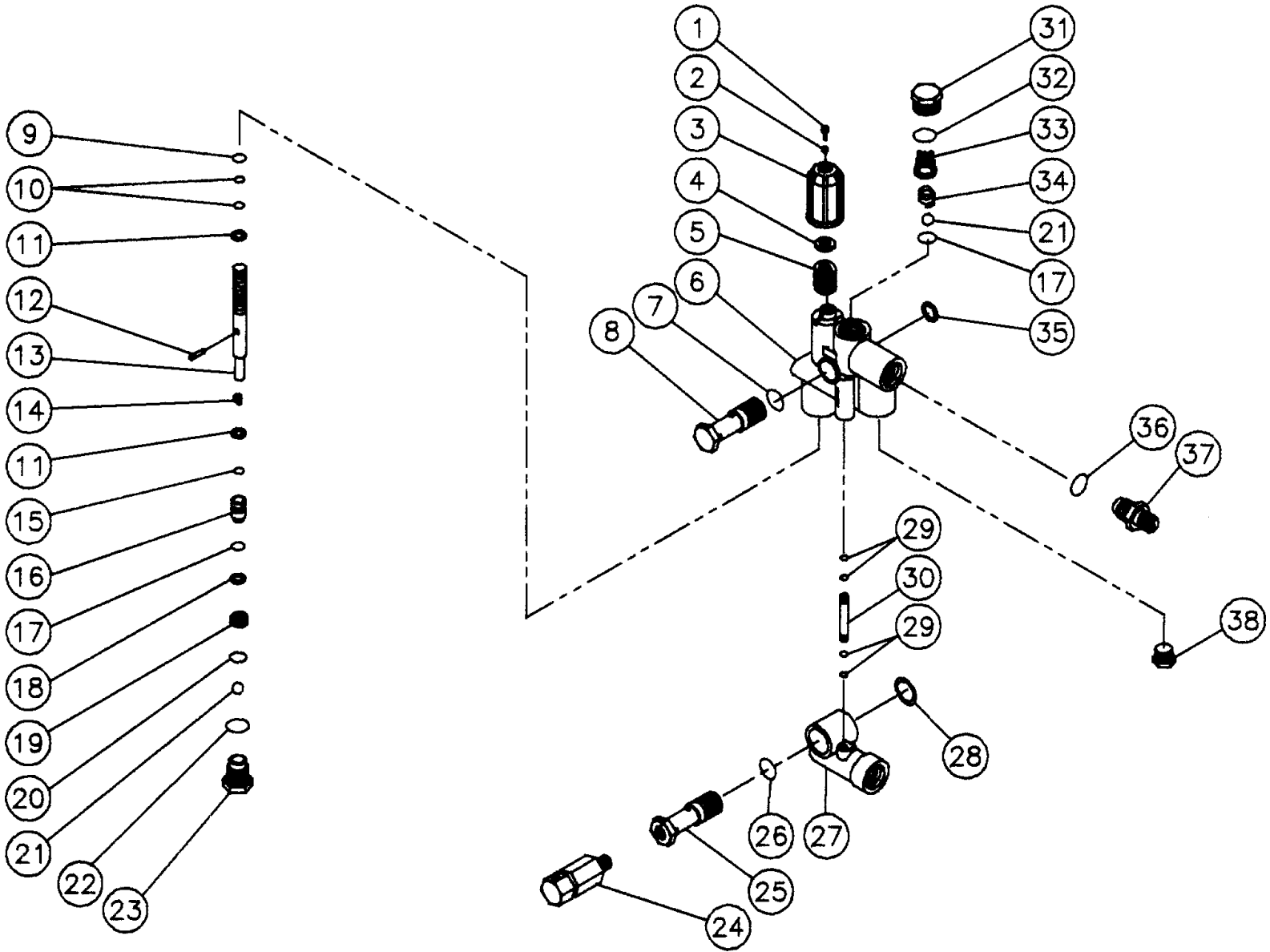
PUMP ASSEMBLY (3-0130)



OMPMP031 / 103195BAR

PUMP ASSEMBLY (3-0130)								
REF. #	DESCRIPTION	PART #	QTY.		REF. #	DESCRIPTION	PART #	QTY.
1	Hex Plug	39-0018	1		27	Oil Level Indicator / Spacer	46-0574	1
2	Washer	28-0600	1		28	O-ring	25-0060	1
3	Hex Plug	39-0019	1		29	Ball Bearing	48-0050	1
4	Washer	28-0601	1		30	Oil Dipstick	46-0143	1
5	Valve Assy. (12-16) (See 70-0028)	N/A Sep.	6		31	Nut	46-0168	3
6	O-ring	25-0012	6		32	Washer	46-0166	3
7	Valve Plug	39-0071	6		33	Plunger	46-0228	3
8	Bolt	27-8439	8		34	O-ring	25-0045	3
9	Lockwasher	29-0154	8		35	Back-up Ring	25-0143	3
10	Hex Plug	39-0032	1		36	Flinger Washer	28-1018	3
11	Pump Manifold-Brass 15mm	46-0566	1		37	Piston Guide	46-0573	3
12	O-ring (See 70-0028)	N/A	6		38	Connecting Rod	46-0572	3
13	Valve Seat (See 70-0028)	N/A	6		39	Pin for Connecting Rod	43-0079	3
14	Valve Plate (See 70-0028)	N/A	6		40	O-ring	25-0317	1
15	Valve Spring (See 70-0028)	N/A	6		41	Crankcase cover	46-0571	1
16	Valve Cage (See 70-0028)	N/A	6		42	Bolt	27-8401	5
17	Head Ring (See 852-0047)	N/A	6		43	O-ring	25-0014	1
18	V-Packing (See 852-0047)	N/A	6		44	Hex Plug	39-0017	1
19	Stop Ring Packing (See 852-0047)	N/A	3		45	Crankcase	46-0570	1
20	Intermediate Ring	46-0223	3		46	Crankcase Shaft	46-0601	1
21	Low Pressure Seal (See 852-0047)	N/A	3		47	Key	46-0602	1
22	Packing Retainer	46-0567	3		48	Oil Seal	46-0604	1
23	O-ring	25-0048	3		49	Lockwasher	29-0054	4
24	Oil Seal	26-0046	3		50	Bolt	27-8042	4
25	Bolt	27-8000	4			Valve Kit (6 each of 12-16)	70-0028	6
26	Retainer / Oil Level / Spacer	46-0084	1			V-Packing Kit (3 each of 17-19, 21, 23)	852-0047	3

UNLOADER ASSEMBLY (8-0316)



OMGEN195 / 022795BAR

Copyright 1997, Mi-T-M Corporation

UNLOADER ASSEMBLY (8-0316)

REF. #	DESCRIPTION	PART #	QTY.	REF. #	DESCRIPTION	PART #	QTY.
1	Screw	27-8409	1	21	Ball	8-0201	2
2	Nut	30-3024	1	22	O-ring	25-0160	1
3	Pressure Regulating Knob	7-0050	1	23	Cap-Brass	39-0039	1
4	Spring Guide	8-0332	1	24	Thermo Valve	22-0148	1
5	Spring	49-0047	1	25	Fixing Screw	8-0333	1
6	Valve Body	8-0218	1	26	O-ring	25-0053	1
7	O-ring	25-0231	1	27	Inlet Body-Aluminum	46-0242	1
8	Fixing Screw	8-0224	1	28	Washer-Aluminum	28-0601	1
9	Back-up Ring	25-0137	1	29	O-ring	25-0161	4
10	O-ring	25-0138	2	30	By-pass Tube-Brass	8-0223	1
11	Washer	28-0209	2	31	Cap-Brass	39-0040	1
12	Pin	43-0051	1	32	O-ring	25-0136	1
13	Piston Guide	8-0219	1	33	Valve Guide	8-0225	1
14	Spring	49-0049	1	34	Spring	49-0046	1
15	O-ring	25-0163	1	35	Washer	28-0600	1
16	Drive Piston	8-0220	1	36	O-ring	25-0051	1
17	O-ring	25-0050	2	37	Nipple-Brass	8-0130	1
18	Back-up Ring	8-0284	1	38	Cap-Brass	39-0042	1
19	Valve Seat	8-0221	1		Unloader Repair Kit (Inc. 5, 7, 9, 10, 14, 15, 17-22, 25, 28, 31-33)	70-0020	1
20	O-ring	25-0159	1				